

Foreign Whaling in Iceland
Archaeological Excavations at Strákatangi in Hveravík,
Kaldrananeshreppi 2008
Data Structure Report

Magnús Rafnsson and Ragnar Edvardsson

February 2009

NV nr. 1-09

Náttúrustofa Vestfjarða
Aðalstræti 21
415 Bolungarvík

Sími: 4567005
Fax: 4567351

Kennitala: 610397-2209
Netfang: nave@nave.is
Heimasíða: <http://www.nave.is>

1. Introduction.....	4
2. Aims and Methods	4
3. The Excavation at Strákatangi in 2008	5
3.1 Description of Archaeological units	5
3.2 Structure A (Cooperage).....	6
3.3 Structure B (Habitation).....	7
3.4 Structure C (Tryworks).....	8
3.5 Finds.....	8
4. Discussion	9
4.1 Future work.....	10
5. Appendices.....	11
5.1 List of archaeological units.....	12
5.2 List of finds	13
5.4 List of Photographs.....	25
6. Maps and Plans	32
7. Photographs.....	40
8. Bibliography	45

1. Introduction

This is a report of the excavations at Strákatangi in Strandasýsla in 2008. Continuous excavations since 2005 have revealed extensive remains from foreign whalers in the area.

The remains of four structures are visible at the Strákatangi site, three of them are clustered together and the fourth at some distance from the main cluster. The three structures that have been excavated from 2005 are tryworks, a large building with three rooms (habitation) and one smaller building (cooperage).

This report is not the final discussion about the research as the excavation is ongoing. The main aim of the report is to present the data in such a way that it be accessible to both scholars and laymen and give a detailed description of all elements of the project. The analysis of the data is still in progress and it is understood that the reader will not publish any of the material contained herein without the permission of Náttúrustofa Vestfjarða, Strandagaldur ses. and the authors.

A change was made to the archaeological database from the previous years and the main change being that instead of registering samples and bones in a separate list they are now recorded in the small finds database.

2. Aims and Methods

The aim of the 2008 season was as before to excavate the physical remains left behind by foreign whalers at Strákatangi. The focus of the excavation was the northernmost structure in the main ruin complex.

The methodology of the excavations at Strákatangi is the so called *open area* excavation and *single context* recording. This method has been used now for over 10 years on various sites in the North Atlantic and has proved an excellent method of excavating both structures and midden sites (Edvardsson, Ragnar, 2004).

With this method a large area is opened, preferably an area of a 10 x 10 meters and each archaeological unit (context), i.e. deposits, cuts, structures, etc., are excavated in a reversed order, starting with the youngest. All units are cleaned, photographed, planned, and finally removed. The whole area is excavated at the same time, which gives the archaeologists a view of all phases of the site until the whole area is excavated to the undisturbed phase before occupation. Ideally all archaeological units are removed, i.e. structures, midden deposits, and other units and at the end of excavation nothing remains except the soil prior to occupation of the site. This gives a complete understanding of the history of the site and any changes it has gone through.

In the case of the excavation at Strákatangi, no large structural elements were removed, i.e. walls, as the plan is to make the site accessible to tourists after the completion of the excavation.

It is important in order to gain full understanding of any archaeological site that everything prior to the excavation at hand is treated as part of the archaeology and therefore the earlier archaeological trenches at Strákatangi were recorded in the same manner as any other archaeological deposit.

All deposits were sieved with a 4mm mesh to collect bones, wood and artifacts. Control samples were taken from all deposits and those deposits that were thought to be rich in organic material were sampled in more detail. Each sample was collected in a 5 liter bag. A total sample of all floors was also collected during the 2008 season.

3. The Excavation at Strákatangi in 2008

The excavation at Strákatangi was from August to September 2008. The excavation team consisted of Ragnar Edvardsson, Caroline Paulsen, Magnús Rafnsson and Leifur Þór Þórsson

The excavated area was approximately 99 square meters and the whole structure A was included within the trench. The total size of the excavated area is 370 square meters. The grid system from the 2006 excavations was extended to the north, including the whole of structure A. A temporary bench mark was created on the shoreline which later was measured in accurate meters above sea level.

3.1 Description of Archaeological units

Unit 3. Area B/C. (Partially excavated in 2007) A black organic deposit recorded outside the building. Mixed in with this deposit were organic elements (blubber) and small burned bones. It probably represents waste material connected with the tryworks south of the building (similar deposits were recorded during the 2006 season). Same as unit 54.

Unit 51. Area A. This unit is the topsoil covering structure A. It is the same as unit 1 from previous years.

Unit 52. Area A. A light brown deposit on the inside of structure A. This deposit was the collapsed material from the walls mixed with some Aeolian material.

Unit 53. Area B. Collapsed bricks in the north western part of structure B. Collapse from the fireplace in the north western corner.

Unit 54. Area B. Burned deposit, consisting mostly of ash and charcoal. This deposit was only recorded inside the fireplace in the north western corner.

Unit 55. Area B. Sandy deposit mixed with filler from the fireplace in the north western corner of room B. Collapsed material from the fireplace.

Unit 56. Area A. A pile of stones in the south east part of area A. These stones were clearly piled together but for what purpose is not fully understood.

Unit 57. Area A. A single large rock in the south west part of area A. As with the stone pile in the south east part this rock seems to have served some purpose which is not fully understood.

Unit 58. Area B. Black deposit, mixed with sand and charcoal material. This deposit was recorded in the north area of structure B and extended under the wall that divided structure B in two rooms. Same as 17 and 19 from the 2007 excavations.

Unit 59. Area A. Brick floor in structure A. The brick floor extended over half of the inside of the structure.

Unit 60. Area. A. Circular brick structure in the center of the brick floor. Bricks carved out to form a circle and upright bricks around it.

Unit 61. Area A. Sand/charcoal deposit, forming the northern part of the floor in structure A.

Unit 62. Area B. Black floor deposit with a large quantity of wood remains. Lower floor. Only recorded in the north part of structure B.

Unit 63. Area A. Light grey deposit covering unit 60. Unknown function.

Unit 64. Area C. Burned black deposit, very compact. Has the consistency of “tarmac”. Recorded between areas B and C. Similar deposits have been recorded in the area around the tryworks. Same as unit [3].

Unit 65. Area C. Collapsed and fragments of burned bricks inside the fire chamber in the tryworks.

Unit 66. Area C. Burned black deposit on the northeast side of the tryworks, same as number 40 from 2007.

Unit 67. Area A. Cuts alongside the walls in structure A. Eight rectangular holes were recorded, three on the north gable wall, three on the south and one on each longwall.

Unit 68. Area A. The walls of structure A, made of soil.

Unit 69. Area B. Fireplace in northwest corner. Made of bricks.

3.2 Structure A (Cooperage).

The main focus of the 2008 excavation was the northernmost structure of the main ruin complex. This structure was given the code A. The excavated area around structure A was 8 x 6 meters. In the surface the structure was approximately 7 x 6 meters, measured from the outside. The grid system was extended from Y1028/x1000 to Y1039/x1000.

After the removal of turf from the whole excavated area a light brown Aeolian material became visible [51]. This material had accumulated over the structure after the abandonment of the station. Right under this deposit the top of the earth walls of the whole structure were visible and on each side of them a light brown deposit was recorded [52]. This deposit was similar to [51] but had more reddish turf inclusions. Deposit [52] was a mix of Aeolian material and collapse from the walls.

The excavation of deposit [52] was begun on the inside of the structure. Right under this deposit bricks were recorded [59]. These bricks were laid out in regular rows and extended from the south end to the center of the structure. It was clear that this brick construction was a part of the floor of this building. North of this structure, extending from the brick floor to the north gable end, was a black, sandy deposit [61] that was also interpreted as the floor of this building. In the center of the brick floor was a small structure made of bricks [60]. It was clear that these bricks had been carved and then laid out to form a circle. This circle had the approximate dimensions of the bottom of a barrel. Along the edges of this circle upright bricks had been arranged as to support something. It is very likely that this construction is some sort of a platform used during the assembly of wooden barrels for transporting oil.

Along the side of all walls postholes were recorded [67]. Three were along the north gable wall, two in each corner and one in the center. One posthole was recorded along each longwall and three by the south gable wall. All postholes were square and similar in size, about 20 centimeters each. On the south east longwall, facing the sea an entrance into the building was recorded.

The postholes suggest that building A had a timber frame and a roof. Nevertheless, outside the timber frame soil had been piled up to form outer walls [68] for the building. It was clear that these walls were not turf walls as they did not have the same consistency and shape as turf walls recorded on Icelandic sites.

The brick floor and the circular structure in the center of it suggest that this building was the cooperage, i.e. the working and sleeping quarters of the person who was responsible for the assembly of barrels for oil transportation. The cooper was without a doubt the most important person on the station and the best building was reserved for him. This has also been recorded on other excavated whaling stations (Tuck, J.A., 2005, *Walvisvaart in de Gouden Eeuw, 1988*)

3.3 Structure B (Habitation)

The focus of the 2007 excavation was the building in the center of the ruin complex, which had been given the code B. The excavation in 2007 had suggested that this building was primarily a habitation, with a small smithy attached to the southwest end and that the main room was divided in two by a long wall (Paulsen, Caroline, et al. 2007). The north part of building B had not been completely finished at the end of the 2007 season so the excavation continued in 2008.

After the area had been cleaned a deposit of collapsed bricks [53], primarily concentrated in the north part of the area was recorded. These bricks were collapse from the large fireplace [69] in the northwest corner. Below the collapse two deposits were recorded. On the outside of the fireplace a sandy deposit [55], mixed with filler from the fireplace, was recorded. This deposit was also part of the collapse from the fireplace. On the inside of the fireplace was a burned deposit [54], mostly consisting of ash and charcoal. This deposit belonged to the occupational phase of the building.

After the removal of the sandy deposit a thick black organic deposit was recorded [58]. This deposit extended over most parts of the northern area and it was clear that the dividing wall was on top of the deposit. The floor of the building and the fact that it extended underneath the dividing wall suggested that the wall was a later addition and the room had been one large chamber and not two rooms as had been interpreted in 2007. This also explained what the excavators in 2007 had recorded, that the dividing wall was different from all other walls on the site. It was clear that it was made in an Icelandic fashion with the *strengur* method. Another black deposit[62] was recorded below the primary floor. This deposit was similar to [58] but it had a higher consistency of wood remains, in some cases large pieces of wood. Most of the wood had showed markings of burning. Right under the floor deposit was the natural sandy soil as had been recorded during the 2007 excavation.

3.4 Structure C (Tryworks)

The excavation in 2006 had focused on the southern most structure of the main ruin complex. This structure had been given the code C and during that season it had been established that the structure was tryworks with a large platform around it. The platform was excavated in 2006 but the excavators had only removed the upperparts of the oil furnace. Excavation was renewed in 2008 with the aim of fully excavating the furnace.

Once the platform and furnace had been cleaned a row of bricks, set out in a circular fashion, became visible. These bricks had been recorded in 2006 and from the outer part of the furnace. The furnace is circular in shape with a small rectangular protrusion to the north.

In the center of the furnace was a depression filled with fragments of bricks. The excavation began with the removal of this deposit [65]. After the removal of this deposit a large rectangular chamber was recorded. The chamber extended along the north/south axis, approximately 0.80 x 2 meters. The chamber was open towards the south. The chamber had a floor made of large bricks that extended almost to the north end. A similar chamber has been recorded on other trywork excavations and it is a fire chamber and the opening to the north was to keep air flowing into the fire during operation.

The furnace was damaged, as had been noted during the 2006 excavation, both because of four holes dug into it by the farmer at Hveravik and that it had probably been periodically robbed of bricks from the abandonment of the station in the late 17th century.

3.5 Finds

The number of finds during the 2008 season were 328 recorded numbers. Of these 44 were samples, which brings the total number of artifacts from all seasons to 736 numbers. Of the 328 finds 103 (32%) were made of iron, 172 (53%) pieces of ceramics, 1 (0.2%) of copper alloys, 1 of glass (0.2%), 1 of lead (0.2%), 2 of stone (0.5%), 3 of bone 3 (0.9%) and samples 44 (13%). The most numerous of finds in this assemblage are those made of iron and ceramics.

When the finds are divided by units then 12 finds are unstratified (4%), 86 are from unit 3 (26%), 1 from unit 19 (0.3%), 1 from unit 42 (0.3%), 10 from unit 52 (3%), 19 from unit 54 (6%), 2 from unit 55 (0.6%), 39 from unit 58 (12%), 8 from unit 59 (2%), 1 from unit 60 (0.3%), 24 from 61 (7%), 33 from 62 (10%), 76 from 64 (23%), 9 from 65 (3%) and 5 from 66 (0.1).

Tobacco pipes

The largest part of the finds consists of tobacco pipes made of ceramics (clay pipes). This is consistent with the excavations from all seasons.

Of the total ceramic assemblage 137 finds were clay pipe fragments, 118 of them were stems and 19 were bowl fragments. Of the 19 bowl fragments, 8 were whole bowls. All whole pipes were of the earliest types of tobacco pipes, from the early 17th century. Of the 120 stems, 13 had decorations, with flower patterns and scales as the dominating patterns. The stems that had scales probably belong to the "Sir Walter Raleigh" (also known as Jonah and the whale) type dating to the mid 17th century. The flower pattern on

pipe stems became popular in the early part of the 17th century. Of the total number of pipes 8 had a manufacturer's stamp. One such pipe had "Robert Bon" stamped on the stem and it is dated to the mid 17th century.

The clay pipe assemblage is consistent with the 2004 – 2007 excavations. The pipes that have so far been analyzed all belong to the period from the early to mid 17th century. The pipes from the occupational layers of the station, such as floors and fireplaces also date to this period. Based on the relative dating from the finds the station was occupied from about 1615 – 1680.

Metal

The second largest finds assemblage were finds of iron and again this is in consistence with the finds from the 2005 - 2007. Of the 103 iron finds, 63 (60%) were of an unidentifiable type, 40 (39%) were nails. One find was made of copper alloy and was probably a nail, one lead find was recorded but it is uncertain of what type it is.

Pottery and Glass

During the excavation 35 (10%) pottery fragments were recorded. Of the total number of pottery fragments, 28 (57%) were redware, 7 (27%) stoneware. The redware were of the similar type, most of them were glazed and few had a green glazing. The stoneware pieces were all of a Westerwald type, dating to the 17th century, and some fragments were decorated.

4. Discussion

The 2008 excavation season was the final excavation of the main ruin complex. All three structures have now been excavated and identified. One trywork, one habitation with a smithy attached, and a cooperage. It is, however, important to point out that structural elements were neither excavated nor removed as the Strákatangi site is unique in an Icelandic context and has great cultural value. Therefore it was thought important to leave the occupational phase as it was at the end of the 2008 excavations so future generations may enjoy the site.

The excavation has shown that the extent of foreign whaling in Iceland was much greater than previously thought and that large industrial complexes were built on Icelandic soil in the 17th century. The discovery of the Strákatangi station is the first evidence of a large scale commercial industry in the country. These facts put the Strákatangi site alongside the discovery of the whaling stations in Red Bay, which was the first large scale industry in the New World.

Structure A has been identified as the cooperage, where the cooper assembled the barrels for the transport of whale oil. Excavations on other whaling stations have suggested that a separate house was built for the cooper and the evidence at Strákatangi also suggest this. The building is 6 x 4 meters measured from the outside and on the inside it is 4.5 x 3.3 meters. It is divided into two areas, a brick floor on the south and a sandy floor on the north. The brick floor was probably the barrel assembly area, as the small structure in the center suggests, and the north are probably sleeping area for the cooper. There is clear evidence that this structure had a timber frame and a roof as large, regularly spaced postholes were recorded.

The archaeological evidence suggests that the largest building, structure B, was the living quarters of the station crew. This building was 11 x 6 meters, measured from the outside and the internal space is 7.8 x 4 meters. Two fireplaces were recorded a large one made of bricks in the northwest corner and the second smaller, circular in shape, situated in the southern half of the structure. The large fireplace is 1.5 x 0.90 meters and similar fireplaces have been recorded at other whaling stations and it is likely that a chimney was part of the upper construction. This building also showed evidence of a timber frame as several circular postholes were recorded during the excavation.

Extending towards the southwest from structure B was a small room measured 3.7 x 4.1 meters on the outside and the inside 3.5 x 2.4 meters. This room was clearly identified as a smithy as it showed evidence of ironworking, remains of a furnaces, slag and iron debris in the floor deposits. No evidence was found of a roof and it is likely that this small room was only covered with canvas.

The last structure of the main ruin complex, structure C, was clearly identified as tryworks. The structure consisted of two main elements platform and a blubber furnace. The platform was made of stones and sand and measured 6.3 x 6.4 meters and had two ramps extending to the north. In the center of the platform was a large circular furnace, 2.8 meters in diameter. In the center of the furnace was a large fire chamber, which was open to the north. It is likely that the rectangular fire chamber was constructed first and the circle later. The northern part of the fire chamber extends approximately 0.90 meters out of the circle to the north.

4.1 Future work

The first stage of research into foreign whaling in Iceland has now been finished. The next stage, which is set to commence in 2009, will focus on the second whaling station in the area, i.e. the station at Eyjar. In 2009 the station will be surveyed with a differential gps and test trenches will be excavated in selected areas. Further excavations will be carried out at Eyjar in the future.

Even though the excavations of the main ruin complex is finished there are still a number of ruins associated with the whaling station that need to be examined. There is still the small house to the southwest of the main complex, the other tryworks further out on the peninsula and the two graves discovered in 2008. In 2009 the house to the southwest and the graves will be excavated.

5. Appendices

5.1 List of archaeological units

Einingar							
Staður	Svæði	Eining	Tegund	Lýsing	Texti	Túlkun	Aðferð
Str08	A	51	LAG	YFIRBORÐ	Torflag með grasrót. Sama og 1 frá 2007.	Yfirborðslag	STUNGUSKÓFLA
Str08	A	52	LAG	JARÐVEGUR	Torflönduð fokmold innan í byggingu A.	Hrun innan í byggingu A	MÚRSKEIÐ
Str08	B	53	LAG	MÚRSTEINN	Múrsteinar og mulningur úr þeim.	Hrun úr ofni í húsi B á svæði B.	MÚRSKEIÐ
Str08	B	54	LAG	ASKA	Brennt lag innan í eldhólfi í ofni í byggingu B, herberbi B.	Eldhólf.	MÚRSKEIÐ
Str08	B	55	LAG	SANDUR	Sandlag blandað Steypublöndu.	Hrun úr ofni í húsi B á svæði B.	MÚRSKEIÐ
Str08	A	56	STEINN	STEINN	Steinhrúga á SA hluta svæðis A.	Óviss túlkun.	
Str08	A	57	STEINN	STEINN	Stór steinn (sprunginn) á SV hluta svæðis A.	Óviss túlkun.	
Str08	B	58	LAG	JARÐVEGUR	Gólf í herbergi B, byggingu B.	Gólf	MÚRSKEIÐ
Str08	B	59	LAG	MÚRSTEINN	Múrsteinsgólf í byggingu A.	Gólf	
Str08	A	60	STEINN	MÚRSTEINN	Pallur fyrir tunnu. Beykistrós	Beykistrós	MÚRSKEIÐ
Str08	A	61	LAG	SANDUR	Sandlag í norðurhluta byggingar A.	Gólf	MÚRSKEIÐ
Str08	B	62	LAG	JARÐVEGUR	Neðra gólf í B. Svart með miklum viðarleifum	Gólf	MÚRSKEIÐ
Str08	B	63	LAG	JARÐVEGUR	Fingert lag af lífrænu efni ofan á beykistrósinni.	Óviss túlkun.	MÚRSKEIÐ
Str08	B	64	LAG	JARÐVEGUR	Svart lag sunnan við B. Milli bræðslu og B.		
Str08	C	65	FILLING	MULNINGUR	Múrsteinshrun innan í bræðsluofni.	Hrun	MÚRSKEIÐ
Str08	C	66	LAG	ASKA	Kolað lag norðaustan við bræðsluna. Sama og 40 frá 2006.	Ruslslag	MÚRSKEIÐ
Str08	A	67	SKURÐUR	STOÐARHOLA	Ferhyrndar stoðarholur í byggingu A.	Stoðarholur	
Str08	A	68	LAG	JARÐVEGUR	Útveggir í byggingu A.	Veggir í byggingu A.	
Str08	B	69		MÚRSTEINN	Múrsteinshleðsla í norðvestur hluta B.	Eldstæði	

5.2 List of finds

FUNDIR						
Staður	Svæði	Eining	Fundanúmer	Efni	Tegund	Lýsing
Str08	A	0	1	Nagli	JÁRN	Naglinn er lítill með ferhyrndum haus.
Str08	A	0	2	Krítarpípa	BRENNDUR LEIR	Pípuleggur með blómamynstri. 17. öld.
Str08	A	0	3	Diskur	LEIRKER	Lítið brot af gljáðum rauðleir.
Str08	A	0	4	Krítarpípa	BRENNDUR LEIR	Óskreyttur pípuleggur.
Str08	A	0	5	Krítarpípa	BRENNDUR LEIR	Óskreyttir pípuleggur.
Str08	A	0	6	Tinna	STEINN	Hvít tinna, þunn.
Str08	B	0	7	Nagli	JÁRN	Lítill nagli með ferhyrndum haus.
Str08	B	0	8	Nagli	JÁRN	Nagli með ferhyrndum haus. Langur.
Str08	B	0	9	Nagli	JÁRN	Nagli með ferhyrndum haus.
Str08	B	54	10	Lífrænt	SÝNI	Nokkrir lífrænir, brenndir molar.
Str08	A	0	11	Steinkol	SÝNI	Einn lítill kolamoli.
Str08	A	0	12	Ópekkt	SÝNI	Morkið bein eða viður.
Str08	B	55	13	Bein	SÝNI	Lítið bein, sennilega úr fugli.
Str08	A	59	14	Ópekkt	JÁRN	3 járnbútar. Sennilega brot úr nöglum.
Str08	B	54	15	Nagli	JÁRN	Langur nagli með ferhyrndum haus.
Str08	A	59	16	Ópekkt	JÁRN	Þrír ryðgaðir bútar.
Str08	A	52	17	Nagli	JÁRN	Þrír naglabútar. Ryðgaðir.
Str08	A	52	18	Nagli	JÁRN	Ryðgaður nagli með steinvöllum föstum í ryðinu.
Str08	A	52	19	Krítarpípa	BRENNDUR LEIR	Krítarpípuleggur, óskreyttur.
Str08	B	55	20	Krítarpípa	BRENNDUR LEIR	Krítarpípuleggur, óskreyttur.
Str08	A	59	21	Nagli	JÁRN	Ryðgaður nagli, hausinn vantar.
Str08	A	59	22	Krítarpípa	BRENNDUR LEIR	Tvö brot óskreytt.
Str08	A	59	23	Glas	GLER	Tvö brot. Þunnt grænleitt gler.
Str08	B	54	24	Nagli	JÁRN	Ryðgaður nagli, ferhyrndur haus.
Str08	A	52	25	Krítarpípa	BRENNDUR LEIR	Leggur, óskreyttur.

FUNDIR						
Staður	Svæði	Eining	Fundanúmer	Efni	Tegund	Lýsing
Str08	A	59	26	Krítarpípa	BRENN DUR LEIR	Leggur, óskreyttur.
Str08	A	54	27	Nagli	JÁRN	Ryðgaður nagli með ferhyrnum haus.
Str08	A	52	28	Nagli	JÁRN	Ryðgaður nagli með ferhyrnum haus.
Str08	A	52	29	Nagli	JÁRN	Ryðgaður nagli. Hausinn vantar.
Str08	A	52	30	Nagli	JÁRN	Ryðguð naglabrot. 9 brot.
Str08	B	54	31	Óþekkt	JÁRN	Ryðgað brot.
Str08	A	59	32	Óþekkt	JÁRN	3 lítil brot. Sennilega naglar.
Str08	B	54	33	Nagli	JÁRN	Nagli, langur með ferhyrnum haus.
Str08	B	54	34	Nagli	JÁRN	Nagli, langur með ferhyrnum haus.
Str08	B	54	35	Óþekkt	JÁRN	Tvö lítil ryðguð brot.
Str08	B	54	36	Nagli	JÁRN	Langur nagli með ferhyrnum haus,
Str08	B	54	37	Nagli	JÁRN	Langur nagli með ferhyrnum haus,
Str08	A	52	38	Nagli	JÁRN	Lítill nagli með ferhyrnum haus.
Str08	B	54	39	Nagli	JÁRN	Ryðgaður bútur.
Str08	A	61	40	Nagli	JÁRN	Lítill ryðgaður nagli.
Str08	A	61	41	Nagli	JÁRN	3 naglar. Ryðgaðir.
Str08	A	61	42	Nagli	JÁRN	Lítið brot.
Str08	A	61	43	Nagli	JÁRN	Ryðgaður lítill nagli.
Str08	A	61	44	Nagli	JÁRN	Ryðgaður nagli með ferhyrnum haus.
Str08	A	61	45	Nagli	JÁRN	Ryðgað lítið brot.
Str08	A	61	46	Óþekkt	JÁRN	Lítið ryðgað brot, sennilega nagli.
Str08	B	54	47	Aska	SÝNI	Eining [54]. Eldstæði í B.
Str08	B	54	48	Aska	SÝNI	Eining [54]. Eldstæði í B.
Str08	B	54	49	Lífrænt	SÝNI	Kol/Lífrænt
Str08	B	54	50	Lífrænt	SÝNI	Kol/Lífrænt
Str08	B	54	51	Lífrænt	SÝNI	Kol/Lífrænt
Str08	B	54	52	Bein	BEIN	4 lítil bein.
Str08	B	54	53	Óþekkt	SÝNI	Eggskurn eða skel.
Str08	B	54	54	Bein	SÝNI	Brennt bein.
Str08	A	58	55	Óþekkt	JÁRN	Lítið ryðgaður járnútur.
Str08	A	58	56	Óþekkt	JÁRN	Lítið ryðgaður járnútur.
Str08	A	58	57	Óþekkt	JÁRN	Þrjár ryðgaðir óþekktir járnhlutir.
Str08	A	58	58	Óþekkt	JÁRN	Lítill járnútur

FUNDIR						
Staður	Svæði	Eining	Fundanúmer	Efni	Tegund	Lýsing
Str08	A	58	59	Óþekkt	JÁRN	Lítill járnbútur
Str08	A	58	60	Óþekkt	JÁRN	Lítill járnbútur
Str08	B	62	61	Krítarpípa	BRENNDUR LEIR	Lítið leggjarbrot, óskreytt.
Str08	B	62	62	Krítarpípa	BRENNDUR LEIR	Lítið brot úr haus.
Str08	B	62	63	Óþekkt	LEIRKER	Lítið brot. Sennilega steinleir.
Str08	B	3	64	Krítarpípa	BRENNDUR LEIR	Lítið brot úr legg.
Str08	B	3	65	Krítarpípa	BRENNDUR LEIR	Lítið leggjarbrot. Framhluti.
Str08	B	3	66	Krítarpípa	BRENNDUR LEIR	Lítið leggjarbrot. Miðhluti/aftarlega.
Str08	B	3	67	Krítarpípa	BRENNDUR LEIR	Lítið leggjarbrot.
Str08	B	3	68	Krítarpípa	BRENNDUR LEIR	Brot úr legg.
Str08	B	3	69	Krítarpípa	BRENNDUR LEIR	Brot úr legg.
Str08	B	3	70	Krítarpípa	BRENNDUR LEIR	Brot úr legg.
Str08	B	3	71	Krítarpípa	BRENNDUR LEIR	Brot úr legg. Skraut, blómamunstur.
Str08	B	3	72	Krítarpípa	BRENNDUR LEIR	Brot úr legg.
Str08	B	3	73	Krítarpípa	BRENNDUR LEIR	Heill haus með hluta af legg. Stimpill á hæl, kóróna.
Str08	B	61	74	Krítarpípa	BRENNDUR LEIR	Leggur, fremri hluti.
Str08	B	3	75	Krítarpípa	BRENNDUR LEIR	Rauðleir, glerjað.
Str08	B	3	76	Krítarpípa	BRENNDUR LEIR	Leggur. Brotið er alveg við hausinn,
Str08	B	3	77	Krítarpípa	BRENNDUR LEIR	Brot úr legg.
Str08	B	3	78	Krítarpípa	BRENNDUR LEIR	Brot úr legg.
Str08	B	3	79	Óþekkt	JÁRN	Ryðgað ílla farið brot.
Str08	B	3	80	Krítarpípa	BRENNDUR LEIR	Langt brot úr legg.
Str08	B	3	81	Krítarpípa	BRENNDUR LEIR	Lítið brot úr legg.
Str08	B	3	82	Krítarpípa	BRENNDUR LEIR	Lítið brot úr legg.
Str08	B	3	83	Krítarpípa	BRENNDUR LEIR	Brot úr legg. Skreytt. Mynstrið virðist vera

FUNDIR						
Staður	Svæði	Eining	Fundanúmer	Efni	Tegund	Lýsing
						hreistur.
Str08	B	3	84	Krítarpípa	BRENNDUR LEIR	Lítið brot.
Str08	B	3	85	Krítarpípa	BRENNDUR LEIR	Brot úr legg.
Str08	B	62	86	Krítarpípa	BRENNDUR LEIR	Tvö brot úr legg.
Str08	B	3	87	Krítarpípa	BRENNDUR LEIR	Lítið brot úr legg.
Str08	B	3	88	Krítarpípa	BRENNDUR LEIR	Tvö brot úr legg.
Str08	B	58	89	Krítarpípa	BRENNDUR LEIR	Heill haus. Fyrri hluti 17.aldar.
Str08	B	58	90	Krítarpípa	BRENNDUR LEIR	Brot úr legg.
Str08	B	61	91	Krítarpípa	BRENNDUR LEIR	Brot úr legg.
Str08	B	62	92	Krítarpípa	BRENNDUR LEIR	Brot úr legg.
Str08	B	3	93	Krítarpípa	BRENNDUR LEIR	Brot úr legg.
Str08	B	3	94	Krítarpípa	BRENNDUR LEIR	Brot úr legg.
Str08	B	62	95	Krítarpípa	BRENNDUR LEIR	Brot úr legg.
Str08	B	62	96	Krítarpípa	BRENNDUR LEIR	Lítið brot úr haus.
Str08	B	62	97	Krítarpípa	BRENNDUR LEIR	Lítið brot úr haus.
Str08	B	62	98	Krítarpípa	BRENNDUR LEIR	Lítið brot úr legg.
Str08	B	62	99	Krítarpípa	BRENNDUR LEIR	Lítið brot úr legg.
Str08	B	62	100	Krítarpípa	BRENNDUR LEIR	Brot úr haus.
Str08	B	3	101	Krítarpípa	BRENNDUR LEIR	Lítið brot úr legg.
Str08	B	62	102	Krítarpípa	BRENNDUR LEIR	Tvö leggjárbrot. Hreisturskreyting.
Str08	B	62	103	Krítarpípa	BRENNDUR LEIR	Lítið brot úr legg.
Str08	B	3	104	Skál	LEIRKER	Lítið brot, glerjað.
Str08	B	3	105	Ópekkt	LEIRKER	Steinleir.
Str08	B	3	106	Ópekkt	LEIRKER	Rauðleir.
Str08	B	62	107	Ópekkt	JÁRN	Lítið ryðgað brot.
Str08	B	62	108	Ópekkt	JÁRN	

FUNDIR						
Staður	Svæði	Eining	Fundanúmer	Efni	Tegund	Lýsing
Str08	B	62	109	Óþekkt	JÁRN	
Str08	B	62	110	Óþekkt	JÁRN	
Str08	B	62	111	Óþekkt	JÁRN	
Str08	B	62	112	Óþekkt	JÁRN	
Str08	B	3	113	Óþekkt	JÁRN	
Str08	B	3	114	Óþekkt	JÁRN	
Str08	B	3	115	Óþekkt	JÁRN	
Str08	B	3	116	Óþekkt	KOPARBLANDA	
Str08	B	3	117	Óþekkt	JÁRN	
Str08	B	3	118	Óþekkt	JÁRN	
Str08	A	61	119	Óþekkt	JÁRN	Stórt stykki.
Str08	A	61	120	Nagli	JÁRN	Lítill ryðgaður nagli.
Str08	A	61	121	Nagli	JÁRN	Lítill nagli.
Str08	A	61	122	Byssukúla	BLÝ	Hringlaga kúla. Byssukúla.
Str08	A	59	123	Óþekkt	JÁRN	
Str08	A	61	124	Óþekkt	JÁRN	
Str08	A	61	125	Nagli	JÁRN	Lítill ryðgaður nagli með ferhyrindum haus.
Str08	A	61	126	Óþekkt	JÁRN	
Str08	A	61	127	Óþekkt	JÁRN	
Str08	A	52	128	Óþekkt	JÁRN	
Str08	A	61	129	Óþekkt	JÁRN	
Str08	A	52	130	Nagli	JÁRN	Lítill ryðgaður nagli.
Str08	A	61	131	Nagli	JÁRN	Lítill ryðgaður nagli.
Str08	A	61	132	Óþekkt	JÁRN	
Str08	A	61	133	Óþekkt	JÁRN	
Str08	A	61	134	Óþekkt	JÁRN	Stórt ryðgað stykki. Meitill?
Str08	B	3	135	Óþekkt	JÁRN	Tvö lítill brot.
Str08	B	3	136	Óþekkt	JÁRN	
Str08	B	3	137	Óþekkt	SÝNI	
Str08	B	62	138	Tennur	SÝNI	Kindartennur.
Str08	B	3	139	Brennt bein	SÝNI	
Str08	B	3	140		SÝNI	Fuglsbein.
Str08	B	3	141	Hvalbein	SÝNI	Hvalbein
Str08	B	58	142		SÝNI	Bein
Str08	B	58	143		SÝNI	Kol og viðarleifar.
Str08	B	58	144		SÝNI	Gólf (x1001/y1023). Efra gólf.

FUNDIR						
Staður	Svæði	Eining	Fundanúmer	Efni	Tegund	Lýsing
Str08	A	60	145		SÝNI	Grátt steinlím eða lífrænt efni.
Str08	B	19	146	Krítarpípa	BRENNDUR LEIR	Heil pípa, brotið úr haus. Rósettustympill.
Str08	A	61	147	Viðarleifar	SÝNI	Sennilega viðarleifar.
Str08	B	58	148	Óþekkt	ANNAÐ	Mögulega textílleifar
Str08	B	58	149	Óþekkt	JÁRN	Nokkrir illa farnir járnmalar.
Str08	B	58	150	Óþekkt	JÁRN	Ryðgaður járnkoli
Str08	B	58	151	Óþekkt	JÁRN	Ryðgaður járnkoli
Str08	B	58	152	Krítarpípa	BRENNDUR LEIR	Hluti hauss.
Str08	B	58	153	Óþekkt	JÁRN	Nagli
Str08	B	58	154	Óþekkt	JÁRN	Ryðgaður moli.
Str08	B	58	155	Óþekkt	JÁRN	Nokkrir járnmalar.
Str08	B	58	156	Óþekkt	JÁRN	Ryðgað en lítur út fyrir að hafa haus. Mögulega meitill.
Str08	B	58	157	Óþekkt	JÁRN	Nokkrir óþekkjalegir molar
Str08	B	58	158	Óþekkt	JÁRN	Ryðgaður moli.
Str08	B	58	159	Ílát	LEIRKER	Barmur af íláti úr rauðleir með grænum glerungi að utan.
Str08	B	58	160	Óþekkt	JÁRN	Nokkrir ryðgaðir járnmalar.
Str08	B	58	161	Óþekkt	JÁRN	Lítill járnbutur, ryðgaður.
Str08	B	58	162	Óþekkt	JÁRN	Lítill járnbutur, ryðgaður.
Str08	B	58	163	Óþekkt	JÁRN	Ryðgaður járnbutur. Líklega nagli.
Str08	B	3	164	Óþekkt	JÁRN	Stór járnbutur, ryðgaður.
Str08	B	3	165	Ílát	LEIRKER	Lítið leirkersbrot. Rauðleir með grænum glerungi.
Str08	B	3	166	Krítarpípa	BRENNDUR LEIR	Örlítið brot úr legg.
Str08	B	3	167	Krítarpípa	BRENNDUR LEIR	Örlítið brot úr legg.
Str08	B	3	168	Ílát	LEIRKER	Tvö brot. Steinleir, sennilega Westerwald. 17. öld.
Str08	B	3	169	Krítarpípa	BRENNDUR LEIR	Tvö brot. Skreyttur leggur. Sennilega "Sir Walter Raleigh".
Str08	B	3	170	Krítarpípa	BRENNDUR LEIR	Eitt brot. Skreyttur leggur. Sennilega "Sir Walter Raleigh".
Str08	B	3	171	Krítarpípa	BRENNDUR LEIR	Leggur, lítið brot.
Str08	B	3	172	Krítarpípa	BRENNDUR LEIR	Leggur, skreytt brot. Hluti af hæl.

FUNDIR

Staður	Svæði	Eining	Fundanúmer	Efni	Tegund	Lýsing
Str08	B	3	173	Óþekkt	JÁRN	Tvö lítið ryðguð brot.
Str08	B	3	174	Krítarpípa	BRENNDUR LEIR	Lítið brot úr legg.
Str08	B	3	175	Krítarpípa	BRENNDUR LEIR	Lítið brot úr legg.
Str08	B	3	176	Krítarpípa	BRENNDUR LEIR	Brot þar sem leggur mætir haus. Stimpill á hælnum.
Str08	B	3	177	Krítarpípa	BRENNDUR LEIR	Brot úr legg.
Str08	B	3	178	Krítarpípa	BRENNDUR LEIR	Lítið brot úr legg.
Str08	B	3	179	Krítarpípa	BRENNDUR LEIR	Brot úr legg.
Str08	B	3	180	Krítarpípa	BRENNDUR LEIR	Brot úr haus.
Str08	B	3	181	Krítarpípa	BRENNDUR LEIR	Brot úr haus.
Str08	B	3	182	Krítarpípa	BRENNDUR LEIR	Brot úr legg.
Str08	B	3	183	Krítarpípa	BRENNDUR LEIR	Brot úr legg. Skreytt.
Str08	B	3	184	Krítarpípa	BRENNDUR LEIR	Heill haus, óskreyttur.
Str08	B	3	185	Krítarpípa	BRENNDUR LEIR	Nokkur lífil brot úr sömu þípunni.
Str08	B	3	186	Krítarpípa	BRENNDUR LEIR	Lítið brot.
Str08	B	3	187	Krítarpípa	BRENNDUR LEIR	Lítið brot.
Str08	B	3	188	Krítarpípa	BRENNDUR LEIR	Lítið brot.
Str08	B	3	189	Krítarpípa	BRENNDUR LEIR	Lítið brot.
Str08	B	3	190	Krítarpípa	BRENNDUR LEIR	Lítið brot.
Str08	B	3	191	Krítarpípa	BRENNDUR LEIR	Leggur, skreyttur.
Str08	B	3	192	Óþekkt	JÁRN	Tvö ryðguð brot.
Str08	B	3	193	Óþekkt	JÁRN	Sennilega tveir naglar ryðgaðir saman.
Str08	B	3	194	Óþekkt	JÁRN	Lítill ryðgaður járnkoli.
Str08	B	3	195	Ílát	LEIRKER	Örlítið brot úr steinleir.
Str08	B	3	196	Ílát	LEIRKER	Lítið brot úr rauðleir með glerungi.
Str08	B	3	197	Ílát	LEIRKER	Lítið brot úr rauðleir með glerungi.

FUNDIR						
Staður	Svæði	Eining	Fundanúmer	Efni	Tegund	Lýsing
Str08	B	3	198	Ílát	LEIRKER	Lítið brot úr rauðleir með glerungi.
Str08	B	3	199	Krítarpípa	BRENNDUR LEIR	Brot úr legg.
Str08	B	3	200	Krítarpípa	BRENNDUR LEIR	Brot úr legg.
Str08	B	3	201	Krítarpípa	BRENNDUR LEIR	Brot úr legg.
Str08	B	3	202	Krítarpípa	BRENNDUR LEIR	Lítið brot úr legg.
Str08	B	3	203	Krítarpípa	BRENNDUR LEIR	Lítið brot úr legg.
Str08	A	61	204	Nagli	JÁRN	5 heillegir naglar.
Str08	B	3	206	Ópekkt	JÁRN	Ryðgaður moli.
Str08	B	3	207	Nagli	JÁRN	Ryðgaður Íftill nagli.
Str08	B	58	208	Ópekkt	JÁRN	Nokkrir ryðgaðir molar.
Str08	B	64	209	Krítarpípa	BRENNDUR LEIR	Leggur.
Str08	B	64	210	Krítarpípa	BRENNDUR LEIR	Brot úr legg við hælinn.
Str08	B	64	211	Krítarpípa	BRENNDUR LEIR	Brot úr legg.
Str08	B	64	212	Krítarpípa	BRENNDUR LEIR	Brot úr legg.
Str08	B	64	213	Krítarpípa	BRENNDUR LEIR	Nokkur smábrot úr legg.
Str08	B	64	214	Krítarpípa	BRENNDUR LEIR	Brot úr legg við hælinn.
Str08	B	64	215	Krítarpípa	BRENNDUR LEIR	Brot úr legg.
Str08	B	64	216	Krítarpípa	BRENNDUR LEIR	Brot úr legg.
Str08	B	64	217	Krítarpípa	BRENNDUR LEIR	Brot úr haus.
Str08	B	64	218	Krítarpípa	BRENNDUR LEIR	Brot úr legg.
Str08	B	64	219	Krítarpípa	BRENNDUR LEIR	Brot úr legg.
Str08	B	64	220	Krítarpípa	BRENNDUR LEIR	Brot úr legg.
Str08	B	64	221	Krítarpípa	BRENNDUR LEIR	Brot úr haus.
Str08	B	64	222	Krítarpípa	BRENNDUR LEIR	Brot úr legg.
Str08	B	64	223	Krítarpípa	BRENNDUR LEIR	Brot úr legg.

FUNDIR						
Staður	Svæði	Eining	Fundanúmer	Efni	Tegund	Lýsing
Str08	B	64	224	Krítarpípa	BRENNDUR LEIR	Brot úr legg.
Str08	B	64	225	Krítarpípa	BRENNDUR LEIR	Brot úr legg.
Str08	B	64	226	Krítarpípa	BRENNDUR LEIR	Brot úr legg.
Str08	B	64	227	Krítarpípa	BRENNDUR LEIR	Brot úr legg.
Str08	B	64	228	Krítarpípa	BRENNDUR LEIR	Tvö lítil brot úr legg.
Str08	B	64	229	Krítarpípa	BRENNDUR LEIR	Brot úr legg.
Str08	B	64	230	Krítarpípa	BRENNDUR LEIR	Brot úr legg.
Str08	B	64	231	Krítarpípa	BRENNDUR LEIR	Brot úr legg.
Str08	B	64	232	Krítarpípa	BRENNDUR LEIR	Brot úr legg. Blómaskraut.
Str08	B	64	233	Krítarpípa	BRENNDUR LEIR	Brot úr legg.
Str08	B	64	234	Óþekkt	JÁRN	Lítill ryðgaður moli.
Str08	B	64	236	Nagli	JÁRN	Líill ryðgaður nagli.
Str08	B	64	237	Nagli	JÁRN	Líill ryðgaður nagli.
Str08	B	64	238	Nagli	JÁRN	Líill ryðgaður nagli.
Str08	B	64	239	Nagli	JÁRN	Líill ryðgaður nagli.
Str08	B	64	240	Ílát	LEIRKER	Nokkur smábrot úr sama ítláti. Rauðleir með glerjungi.
Str08	B	64	241	Ílát	LEIRKER	Tvö rauðleirsbrot með grænum glerjungi.
Str08	B	64	242	Ílát	LEIRKER	Lítið rauðleirsbrot.
Str08	B	64	243	Ílát	LEIRKER	Tvö rauðleirsbrot.
Str08	B	64	244	Ílát	LEIRKER	Nokkur rauðleirsbrot með glerjungi.
Str08	B	64	245	Ílát	LEIRKER	Tvö rauðleirsbrot.
Str08	B	64	246	Diskur	LEIRKER	Eitt rauðleirsbrot með skreytingu.
Str08	B	64	247	Ílát	LEIRKER	Rauðleirsbrot með grænum glerjungi.
Str08	B	64	248	Ílát	LEIRKER	Lítið rauðleirsbrot.
Str08	B	64	249	Ílát	LEIRKER	5 rauðleirsbrot með glerjungi.
Str08	B	64	250	Ílát	LEIRKER	6 rauðleirsbrot með glerjungi.
Str08	B	64	251	Ílát	LEIRKER	Rauðleirsbrot með glerjungi.
Str08	B	64	252	Ílát	LEIRKER	Rauðleir, brot úr fæti.

FUNDIR						
Staður	Svæði	Eining	Fundanúmer	Efni	Tegund	Lýsing
Str08	B	64	253	Ílát	LEIRKER	Rauðleir með glerjungu.
Str08	B	64	254	Ílát	LEIRKER	Tvö rauðleirsbrot með glerjungu.
Str08	C	65	255	Krítarpípa	BRENNDUR LEIR	Haus, óskreyttur.
Str08	C	65	256	Nagli	JÁRN	Heill nagli, boginn.
Str08	C	65	257	Ílát	LEIRKER	Nokkur rauðleirsbrot úr sama íláti. Glerjað.
Str08	C	65	258	Krítarpípa	BRENNDUR LEIR	Haus með stimpli á hælnum.
Str08	A	62	259	Ópekkt	JÁRN	Stór ryðmoli.
Str08	A	62	260	Nagli	JÁRN	Ryðgaður nagli með stórum haus.
Str08	A	62	261	Krítarpípa	BRENNDUR LEIR	Brot úr legg.
Str08	A	62	262	Krítarpípa	BRENNDUR LEIR	Brot úr legg.
Str08	C	65	263	Ópekkt	STEINN	Lítill steinn, mögulega erlent grjót.
Str08	B	64	264	Krítarpípa	BRENNDUR LEIR	Hæll með stimpli. Kóróna, rós og einhverjir stafir.
Str08	B	64	265	Krítarpípa	BRENNDUR LEIR	Haus með stórum hæl og stimpli. Kross.
Str08	B	64	266	Krítarpípa	BRENNDUR LEIR	Leggur.
Str08	B	64	267	Krítarpípa	BRENNDUR LEIR	Leggur með skrauti.
Str08	B	64	268	Krítarpípa	BRENNDUR LEIR	Brot úr pípuhaus.
Str08	B	64	269	Krítarpípa	BRENNDUR LEIR	Brot úr pípuhaus.
Str08	B	64	270	Krítarpípa	BRENNDUR LEIR	Brot úr legg.
Str08	B	64	271	Krítarpípa	BRENNDUR LEIR	Brot úr legg.
Str08	B	64	272	Krítarpípa	BRENNDUR LEIR	Leggur. "Robert Bon".
Str08	B	64	273	Krítarpípa	BRENNDUR LEIR	Brot úr legg.
Str08	B	64	274	Krítarpípa	BRENNDUR LEIR	Brot úr legg.
Str08	B	64	275	Krítarpípa	BRENNDUR LEIR	Brot úr legg með hreistur mynstri.
Str08	B	64	276	Krítarpípa	BRENNDUR LEIR	Brot úr legg.
Str08	B	64	277	Krítarpípa	BRENNDUR LEIR	Brot úr legg með hluta af hausnum áföstum.

FUNDIR						
Staður	Svæði	Eining	Fundanúmer	Efni	Tegund	Lýsing
Str08	B	64	278	Krítarpípa	BRENNDUR LEIR	Brot úr legg.
Str08	B	64	279	Krítarpípa	BRENNDUR LEIR	Brot úr legg.
Str08	B	64	280	Krítarpípa	BRENNDUR LEIR	Brot úr haus.
Str08	B	64	281	Krítarpípa	BRENNDUR LEIR	Brot úr legg.
Str08	B	64	282	Krítarpípa	BRENNDUR LEIR	Haus og leggur úr sömu pípunni.
Str08	B	64	283	Krítarpípa	BRENNDUR LEIR	Brot úr legg.
Str08	B	64	284	Krítarpípa	BRENNDUR LEIR	Brot úr legg.
Str08	B	64	285	Ílát	LEIRKER	Lítið brot úr rauðleir.
Str08	B	64	286	Ílát	LEIRKER	Lítið brot úr steinleir.
Str08	B	64	287	Ílát	LEIRKER	Tvö lítil brot úr rauðleir.
Str08	C	65	288	Ílát	LEIRKER	Eitt stórt rauðleirsbrot.
Str08	B	64	289	Ílát	LEIRKER	Fjögur stór rauðleirsbrot.
Str08	C	65	290	Tönn	BEIN	Kindatönn.
Str08	C	65	291	Mjaðmagrind	BEIN	Sennilega mjaðmagrind úr sel.
Str08	C	65	292	Jarðvegur	SÝNI	Úr botninum á lýsisbræðsluofninum.
Str08	B	62	293	Jarðvegur	SÝNI	x1001/y1024
Str08	B	58	294	Jarðvegur	SÝNI	x1002/y1024
Str08	B	62	295	Jarðvegur	SÝNI	x1002/1023
Str08	B	62	296	Viðarleifar	SÝNI	Brot úr ýmsum koluðum spýtum.
Str08	B	58	297	Jarðvegur	SÝNI	x1001/y1024
Str08	B	58	298	Jarðvegur	SÝNI	x1002/1023
Str08	B	58	299	Viðarleifar	SÝNI	x1002/y1023
Str08	B	3	300	Bein	SÝNI	Brennd bein.
Str08	B	3	301	Bein	SÝNI	Brennd bein.
Str08	B	58	302	Kol	SÝNI	
Str08	B	3	303	Bein	SÝNI	Brennd bein
Str08	B	58	304	Bein	SÝNI	Kindar/Selsbein
Str08	B	58	305	Bein	SÝNI	x1002/1023
Str08	B	58	306	Kol	SÝNI	x1002/1023
Str08	B	58	307	Selur	SÝNI	
Str08	B	58	308	Kol	SÝNI	x1002/1024
Str08	B	62	309	Krítarpípa	BRENNDUR LEIR	Lítið brot af legg.
Str08		0	310	Krítarpípa	BRENNDUR	Lítið brot af legg.

FUNDIR						
Staður	Svæði	Eining	Fundanúmer	Efni	Tegund	Lýsing
					LEIR	Unstratified.
Str08	B	64	311	Krítarpípa	BRENNDUR LEIR	Lítið brot af legg.
Str08	B	62	312	Krítarpípa	BRENNDUR LEIR	Lítið brot af legg.
Str08	C	66	313	Krítarpípa	BRENNDUR LEIR	Lítið brot af legg.
Str08	C	66	314	Krítarpípa	BRENNDUR LEIR	Brot af hæl. Hálfur stimpill.
Str08	C	66	315	Ílát	LEIRKER	Brot úr steinleir með skrauti. Westerwald.
Str08	C	66	316	Ílát	LEIRKER	Brot úr steinleir með skrauti. Westerwald.
Str08	B	64	317	Óþekkt	JÁRN	Lítið brot, ryðgað.
Str08	B	64	318	Óþekkt	JÁRN	Lítið brot, ryðgað.
Str08	B	64	319	Óþekkt	JÁRN	Lítið brot, ryðgað.
Str08	B	64	320	Óþekkt	JÁRN	Lítið brot, ryðgað.
Str08	C	66	321	Óþekkt	JÁRN	Stór ryðgaður járnþútur með pípulegg áföstum.
Str08	B	62	322	Óþekkt	JÁRN	Stór ryðgaður þútur.
Str08	B	64	323	Nagli	JÁRN	Vel varðveittur nagli með ferhyrnum haus.
Str08	B	42	324	Krítarpípa	BRENNDUR LEIR	Brot úr legg.
Str08	B	62	325	Bein	SÝNI	Nokkur brennd bein.
Str08	B	58	326	Viður	SÝNI	Viðarbútur
Str08	B	62	327	Kol	SÝNI	1 poki af kolum.
Str08	B	62	328	Viður	SÝNI	1 poki af brenndum við.

5.4 List of Photographs

Ljósmyndir						
Svæði	Tegund	Sheet	Númer	Dags	Einingar	Lýsing
B	Stafræn		Str08001	15.08.08		Yfirlitsmynd af herbergi B í byggingu B. Horft í vestur.
B	Stafræn		Str08002	15.08.08		Yfirlitsmynd af herbergi b í byggingu B. Horft í suðvestur.
A	Stafræn		Str08003	15.08.08		Vinnumynd.
B	Stafræn		Str08004	15.08.08		Ofn í herbergi B í byggingu B. Horft í vestur.
B	Stafræn		Str08005	15.08.08		Vinnumynd af Magga, horft í norður.
B	Stafræn		Str08006	15.08.08		Ofn í herbergi B í byggingu B. Horft í norður.
B	Stafræn		Str08007	15.08.08		Ofn í herbergi B í byggingu B. Mynd tekin lóðrétt. Sýnir múrsteina í smáatriðum.
B	Stafræn		Str08008	15.08.08		Herbergi B í byggingu B. Horft í austur.
A	Stafræn		Str08009	15.08.08	52	Bygging A. Horft í vestur.
A	Stafræn		Str08010	15.08.08	52	Bygging A. Horft í norður.
A	Stafræn		Str08011	15.08.08	52	Bygging A. Horft í norður.
A	Stafræn		Str08012	15.08.08	56	Steinhleðsla í suðaustur hluta svæðis A. Óviss notkun. Horft í norður.
A	Stafræn		Str08013	15.08.08	56	Steinhleðsla í suðaustur hluta svæðis A. Óviss notkun. Horft í norður.
A	Stafræn		Str08014	15.08.08	57	Sprunginn steinn á suðvestur hluta svæðis A. Óviss notkun. Horft í austur.
A	Stafræn		Str08015	15.08.08	52	Bygging A. Horft í vestur.
A	Stafræn		Str08016	15.08.08	52	Bygging A. Horft í vestur.
A	Stafræn		Str08017	15.08.08	52	Bygging A. Horft í suður..
A	Stafræn		Str08018	15.08.08		Steinar í norðausturhluta svæðis A. Óvíst um tilgang. Myndin er tekin í vestur átt.
A	Stafræn		Str08019	15.08.08		Steinar í norðausturhluta svæðis A. Óvíst um tilgang. Myndin er tekin í vestur átt.
A	Stafræn		Str08020	15.08.08		Vinnumynd, tekin í norður.
A	Stafræn		Str08021	15.08.08		Vinnumynd, tekin í norður.
B	Stafræn		Str08022	14.08.08		Yfirlitsmynd. Sýnir einingar [55] og [53]. Tekin í austur.
A	Stafræn		Str08023	14.08.08		Vinnumynd. Leifur Þór, tekin í norður.
A	Stafræn		Str08024	14.08.08		Vinnumynd. Sýnir hversu þurr jarðvegurinn var eftir að yfirborðstorf hafði verið fjarlægð.
A	Stafræn		Str08025	14.08.08		Vinnumynd. Sýnir múrsteina í suðausturhluta byggingar A.
A	Stafræn		Str08026	14.08.08		Vinnumynd. Bygging A. Horft í vestur.
B	Stafræn		Str08027	14.08.08		Vinnumynd. Sýnir herbergi B í byggingu B á meðan hrunlag er fjarlægð. Ofninn sést greinilega.

Ljósmyndir						
Svæði	Tegund	Sheet	Númer	Dags	Einingar	Lýsing
B	Stafræn		Str08028	14.08.08		Vinnumynd. Ofn í herbergi B í byggingu B við uppgröft. Horft í norður.
B	Stafræn		Str08029	14.08.08		Ofn í herbergi B, byggingu B. Hleðslur í smáatriðum. Horft í austur.
B	Stafræn		Str08030	14.08.08		Ofn í herbergi B, byggingu B. Hleðslur í smáatriðum. Horft í suður.
B	Stafræn		Str08031	14.08.08		Ofn í herbergi B, byggingu B. Hleðslur í smáatriðum. Horft í suður.
B	Stafræn		Str08032	14.08.08		Ofn í herbergi B, byggingu B. Horft í austur.
B	Stafræn		Str08033	14.08.08		Ofn í herbergi B, byggingu B. Horft beint niður.
A	Stafræn		Str08034	14.08.08		Vinnumynd. Horft í norður.
A	Stafræn		Str08035	14.08.08		Vinnumynd. Leifur Þór.
A	Stafræn		Str08036	14.08.08		Yfirlitsmynd af svæði A. Horft í austur.
B	Stafræn		Str08037	14.08.08	58	Vinnumynd. Hluti af gólfi í herbergi B, byggingu B á meðan á uppgreftri stendur.
A	Stafræn		Str08038	13.08.08		Yfirlitsmynd af svæði A eftir að torf hafði verið tekið ofan af. Horft í norðvestur.
A	Stafræn		Str08039	13.08.08		Yfirlitsmynd af svæði A eftir að torf hafði verið tekið ofan af. Horft í suðaustur.
A	Stafræn		Str08040	13.08.08		Yfirlitsmynd af svæði A eftir að torf hafði verið tekið ofan af. Horft í suður.
A	Stafræn		Str08041	13.08.08		Yfirlitsmynd af svæði A eftir að torf hafði verið tekið ofan af. Horft í suðuraustur.
A	Stafræn		Str08042	19.08.08		Vinnumynd. Hús A, múrsteinsgólf. Horft í vestur.
A	Stafræn		Str08043	19.08.08		Yfirlitsmynd. Múrsteinsgólf í húsi A á meðan á uppgreftri stendur.
A	Stafræn		Str08044	19.08.08		Yfirlitsmynd. Múrsteinsgólf í húsi A á meðan á uppgreftri stendur.
A	Stafræn		Str08045	19.08.08		Nagli á múrsteinsgólfi í húsi A.
A	Stafræn		Str08046	19.08.08		Yfirlitsmynd. Norðurhluti byggingar A. Horft í norður.
A	Stafræn		Str08047	19.08.08		Yfirlitsmynd. Norðurhluti byggingar A. Nútíma niðurgröftur, rusl.
B	Stafræn		Str08048	19.08.08		Múrsteins eldstæði í herbergi B, byggingu B. Horft í vestur.
B	Stafræn		Str08049	19.08.08		Eining [55]. Horft í vestur.
B	Stafræn		Str08050	19.08.08		Yfirlitsmynd yfir herbergi B í byggingu B. Eldstæði og eining [55]. Horft í vestur.
B	Stafræn		Str08051	19.08.08		Múrsteins eldstæði í byggingu B, herbergi B. Horft í suður.
B	Stafræn		Str08052	19.08.08		Múrsteins eldstæði í byggingu B, herbergi B. Horft í austur.
B	Stafræn		Str08053	19.08.08		Múrsteins eldstæði í byggingu B, herbergi B.

Ljósmyndir						
Svæði	Tegund	Sheet	Númer	Dags	Einingar	Lýsing
						Horft í norður.
A	Stafræn		Str08054	19.08.08		Vinumynd. Bygging A. Horft í suðvestur.
A	Stafræn		Str08055	19.08.08		Yfirlitsmynd. Bygging A. Múrsteinsgólf og eldstæði. Horft í suðvestur.
A	Stafræn		Str08056	19.08.08		Bygging A. Jaðar múrsteinsgólfs við stoðarholu.
A	Stafræn		Str08057	19.08.08		Bygging A. Nærmynd af múrsteinsgólfi [59].
A	Stafræn		Str08058	19.08.08		Bygging A. Nærmynd af nagla með viðarleifum í norðurhluta byggingarinnar.
A	Stafræn		Str08059	19.08.08		Bygging A. Nærmynd af nagla með viðarleifum í norðurhluta byggingarinnar.
A	Stafræn		Str08060	19.08.08		Bygging A. Upphaf uppgraftrar á múrsteinsgólfi [59].
A	Stafræn		Str08061	19.08.08		Bygging A. Nærmynd af múrsteinsgólfi [59] við upphaf uppgraftrar.
B	Stafræn		Str08062	19.08.08		Bygging B. Uppgröftur á einingu [53].
A	Stafræn		Str08063	19.08.08		Bygging A. Uppgröftur á múrsteinsgólfi [59], eldstæði sést við jaðar uppgraftrar.
A	Stafræn		Str08064	19.08.08		Bygging A. Nærmynd af eldstæði.
A	Stafræn		Str08065	19.08.08		Bygging A. Nærmynd af holu í múrsteinsgólfi.
B	Stafræn		Str08066	19.08.08		Bygging B. Yfirlitsmynd af uppgreftri á einingu [53]. Horft í suðvestur.
B	Stafræn		Str08067	19.08.08		Bygging B. Yfirlitsmynd af uppgreftri á einingu [53]. Horft í norðvestur.
B	Stafræn		Str08068	19.08.08		Bygging B. Yfirlitsmynd af uppgreftri á einingu [53]. Horft í norður.
A	Stafræn		Str08069	19.08.08		Bygging A. Nærmynd af jaðri múrsteinsgólfs. Aska sem lá meðfram veggjum.
A	Stafræn		Str08070	19.08.08		Bygging A. Yfirlitsmynd af múrsteinsgólfi [59]. Horft í norður.
A	Stafræn		Str08071	19.08.08		Bygging A. Yfirlitsmynd af múrsteinsgólfi [59]. Horft í suður.
B	Stafræn		Str08072	19.08.08		Bygging B. Eldstæði og eining [54]. Horft í norður.
B	Stafræn		Str08073	19.08.08		Bygging B. Eldstæði og eining [54]. Horft í norður.
B	Stafræn		Str08074	19.08.08		Bygging B. Eldstæði og eining [54]. Horft í vestur.
B	Stafræn		Str08075	19.08.08		Bygging B. Eldstæði og eining [54]. Horft í suður.
B	Stafræn		Str08076	19.08.08		Bygging B. Eldstæði og eining [54]. Horft í austur.
B	Stafræn		Str08077	21.08.08		Stoðarhola við suðurvegg í herbergi B. Með brenndum viðarleifum.

Ljósmyndir						
Svæði	Tegund	Sheet	Númer	Dags	Einingar	Lýsing
B	Stafræn		Str08078	21.08.08		Stoðarhola við suðurvegg í herbergi B. Með brenndum viðarleifum.
B	Stafræn		Str08079	21.08.08		Vinnumynd, herbergi B.
B	Stafræn		Str08080	21.08.08		Brenndar viðarleyfar í gólfi. Herbergi B. Horft í suður.
B	Stafræn		Str08081	21.08.08		Brenndar viðarleyfar í gólfi. Herbergi B. Horft í suður.
B	Stafræn		Str08082	21.08.08		Stoðarhola við suðurvegg í herbergi B. Horft í suður.
B	Stafræn		Str08083	21.08.08		Stoðarhola við suðurvegg í herbergi B. Horft í suður.
A	Stafræn		Str08084	21.08.08		Vinnumynd. Sandgólf í herbergi A. Horft í norðaustur.
A	Stafræn		Str08085	21.08.08		Ryðgaður járngripur í gólfi húss A.
B	Stafræn		Str08086	21.08.08		Vinnumynd, hús A. Horft í austur.
B	Stafræn		Str08087	21.08.08		Brenndar viðarleifar í gólfi í herbergi B. Horft í suður.
B	Stafræn		Str08088	21.08.08		Brenndar viðarleifar í gólfi í herbergi B. Horft í suður.
B	Stafræn		Str08089	21.08.08		Gólf í herbergi B á meðan á uppgreftri stóð. Horft í austur.
B	Stafræn		Str08090	21.08.08		Gólf í herbergi B, upp við suðurvegg. Horft í suður.
A	Stafræn		Str08091	21.08.08		Yfirlitsmynd af húsi A. Horft í norður.
A	Stafræn		Str08092	21.08.08		Yfirlitsmynd af múrsteinsgólfi í húsi A. Tunnurós sést fyrir miðju. Horft í suður.
A	Stafræn		Str08093	21.08.08		Yfirlitsmynd af múrsteinsgólfi í húsi A. Tunnurós sést fyrir miðju. Horft í norðaustur.
A	Stafræn		Str08094	21.08.08		Nærmynd af múrsteinsgólfi í húsi A. Horft í norðaustur.
A	Stafræn		Str08095	21.08.08		Nærmynd af múrsteinsgólfi og tunnurós í húsi A. Horft í suðvestur.
B	Stafræn		Str08096	21.08.08		Yfirlitsmynd af gólfi í herbergi B. Horft í vestur.
B	Stafræn		Str08097	21.08.08		Yfirlitsmynd af gólfi í herbergi B. Horft í vestur.
B	Stafræn		Str08098	21.08.08		Yfirlitsmynd af gólfi í herbergi B. Horft í vestur.
B	Stafræn		Str08099	21.08.08		Nærmynd af endamörkum gólfs við austurvegg herbergis B. Horft í vestur.
B	Stafræn		Str08100	21.08.08		Gólf í austurenda herbergis B. Horft í suður.
B	Stafræn		Str08101	21.08.08		Gólf í herbergi B. Horft í vestur.
B	Stafræn		Str08102	21.08.08		Gólf í herbergi B. Horft í vestur.
B	Stafræn		Str08103	21.08.08		Brenndar viðarleifar í gólfi herbergis B. Horft í norður.

Ljósmyndir						
Svæði	Tegund	Sheet	Númer	Dags	Einingar	Lýsing
B	Stafræn		Str08104	21.08.08		Gólf í herbergi B. Horft í norður.
B	Stafræn		Str08105	21.08.08		Mörk gólfs og palls í vesturenda herbergis B. Horft í vestur.
B	Stafræn		Str08106	21.08.08		Austurhluti gólfs í herbergi B. Horft í suður.
B	Stafræn		Str08107	21.08.08		Stoðarhola við suðurvegg í herbergi B. Horft í suður.
B	Stafræn		Str08108	21.08.08		Austurhluti gólfs í herbergi B. Horft í norður.
B	Stafræn		Str08109	27.08.08		Lag [3], gólf og torf undir því. Horft í vestur.
B	Stafræn		Str08110	27.08.08		Lag [3], gólf og torf undir því. Horft í vestur.
B	Stafræn		Str08111	27.08.08		Lag [3], gólf og torf undir því. Horft í vestur.
B	Stafræn		Str08112	27.08.08		Vinnumynd við uppgröft á bræðslu. Horft í suðvestur.
B	Stafræn		Str08113	27.08.08		Vinnumynd við uppgröft á bræðslu. Horft í austur.
A	Stafræn		Str08114	27.08.08		Yfirlitsmynd af A. Horft í norður.
A	Stafræn		Str08115	27.08.08		Yfirlitsmynd af A. Horft í austur.
ABC	Stafræn		Str08116	27.08.08		Yfirlitsmynd af uppgraftasvæðinu. Horft í suður.
A	Stafræn		Str08117	27.08.08		Yfirlitsmynd af A. Horft í norður.
A	Stafræn		Str08118	27.08.08		Yfirlitsmynd af A. Horft í suður.
A	Stafræn		Str08119	27.08.08		Yfirlitsmynd af A. Horft í suður.
A	Stafræn		Str08120	27.08.08		Yfirlitsmynd af A. Horft í vestur.
A	Stafræn		Str08121	27.08.08		Nærmynd af múrsteinsgólfi í A. Horft í vestur.
A	Stafræn		Str08122	27.08.08		Nærmynd af sandgólfi í A. Horft í vestur.
A	Stafræn		Str08123	27.08.08		Múrsteinsgólf í A. Horft í austur.
A	Stafræn		Str08124	27.08.08		Múrsteinsgólf í A. Horft í austur.
A	Stafræn		Str08125	27.08.08		Múrsteinsgólf í A. Horft í austur.
A	Stafræn		Str08126	27.08.08		Sandgólf í A. Horft í austur.
A	Stafræn		Str08127	27.08.08		Nærmynd af múrsteinsgólfi og Beykirsós. Horft í suður.
A	Stafræn		Str08128	27.08.08		Nærmynd af múrsteinsgólfi. Horft í vestur.
A	Stafræn		Str08129	27.08.08		Nærmynd af múrsteinsgólfi og inngangi í A. Horft í austur.
A	Stafræn		Str08130	27.08.08		Nærmynd af múrsteinsgólfi. Horft í austur.
A	Stafræn		Str08131	27.08.08		Beykirsós, fyrir uppgröft. Horft í suður.
A	Stafræn		Str08132	27.08.08		Beykirsós, fyrir uppgröft. Horft í austur.
A	Stafræn		Str08133	27.08.08		Beykirsós, fyrir uppgröft. Horft í vestur.
A	Stafræn		Str08134	27.08.08		Stoðarhola í suðvestur horni. Horft í suður.
A	Stafræn		Str08135	27.08.08		Stoðarhola í suðvestur horni. Horft í austur.

Ljósmyndir						
Svæði	Tegund	Sheet	Númer	Dags	Einingar	Lýsing
A	Stafræn		Str08136	27.08.08		Stoðarhola fyrir miðjum vesturvegg. Horft í suður..
A	Stafræn		Str08137	27.08.08		Stoðarhola fyrir miðjum vesturvegg. Horft í austur.
A	Stafræn		Str08138	27.08.08		Múrsteinar í gólfi

Viðar og kolagreiningar

Fyrir: Magnús Rafnsson

Efni: Viðarsýni frá Ströndum

Fjöldi sýna: 5 sýni

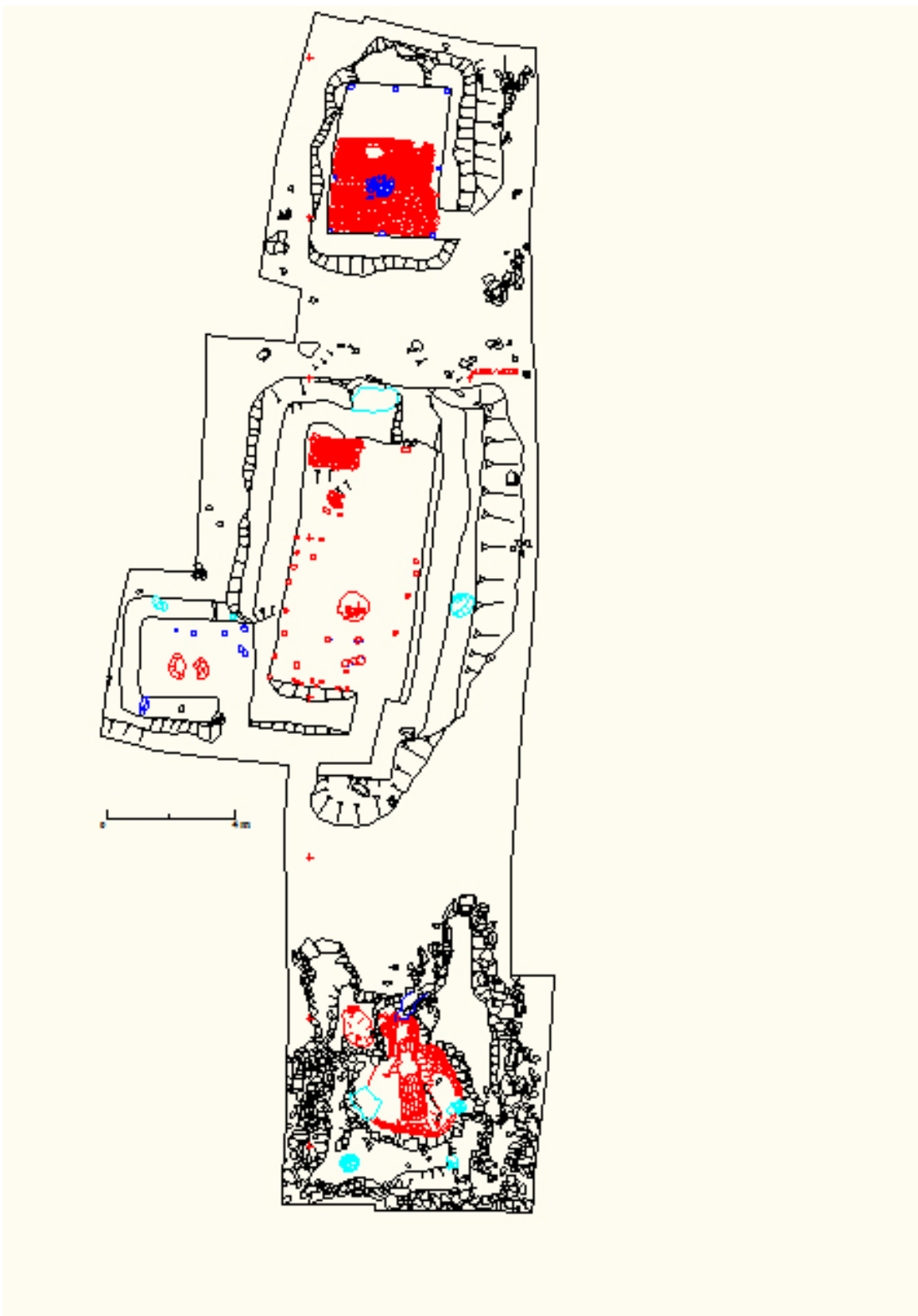
Niðurstöður:

Lýsing/Efni	Viðartegund	Eiginaldur sýnis (fjöldi áhringja)	Sýni gott fyrir C14 aldursgreiningu?
Sýnapoki merktur: STR08, [58], 326. Viður	Kolaður barrviður		Nei
Sýnapoki merktur: STR05 [16], 4. C-14 sýni	Birki (Betula sp.) (kolað að hluta)	10 ár	Já
Sýnapoki merktur: STR08 [0], 12. Bein eða Viður	Leifar af barrvið en mestmegnis torf í pokanum	?	Nei
Sýnapoki merktur: STR08 [61]. Járn/Viður	Járnagli í eikarvið (Quercus sp.)	5 ár	?
Sýnapoki merktur: Ekkert merki. Stórt viðarkefli með járn	Álmur (Ulmus sp.)	97 ár	Nei

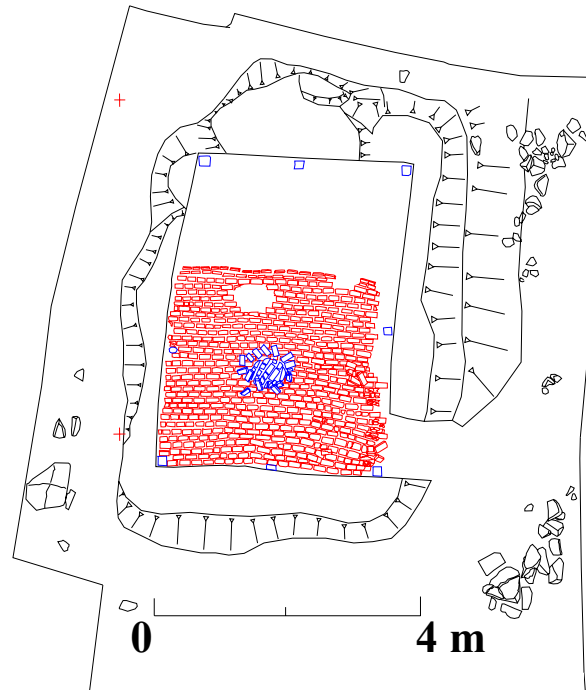
Mógilsá 14 janúar 2009

Dr. Ólafur Eggertsson, sérfræðingur
 Mógilsá, Rannsóknastöð Skógræktar.
 116 Reykjavík
 Sími: 515 4500 (bein lína: 515 4507)
 GSM: 690 4724
 Netfang: olie@skogur.is

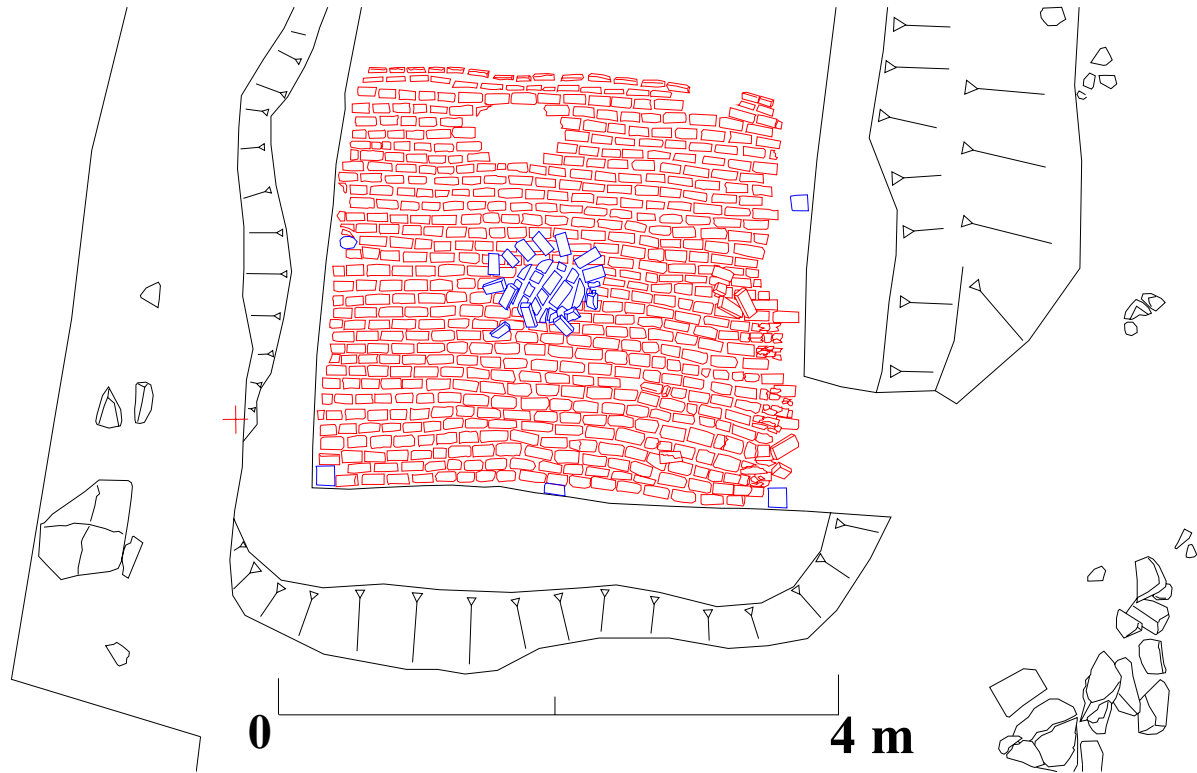
6. Maps and Plans



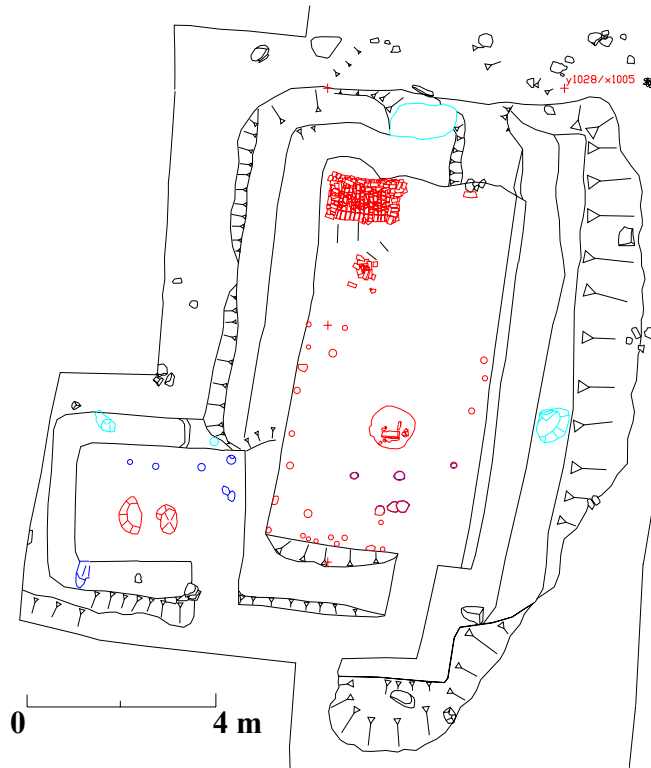
Plan 1. The Strákatangi site and the excavated structures.



Plan 1. Structure A. The cooerage.



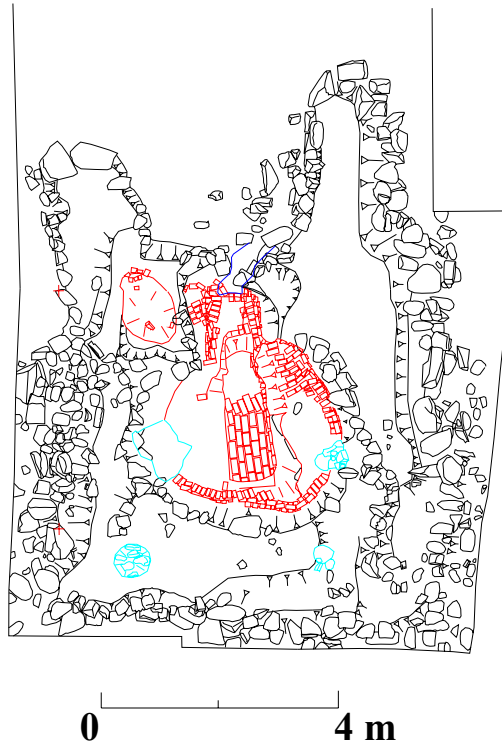
Plan 2. Structure A. The brickfloor and the circular feature in the center.



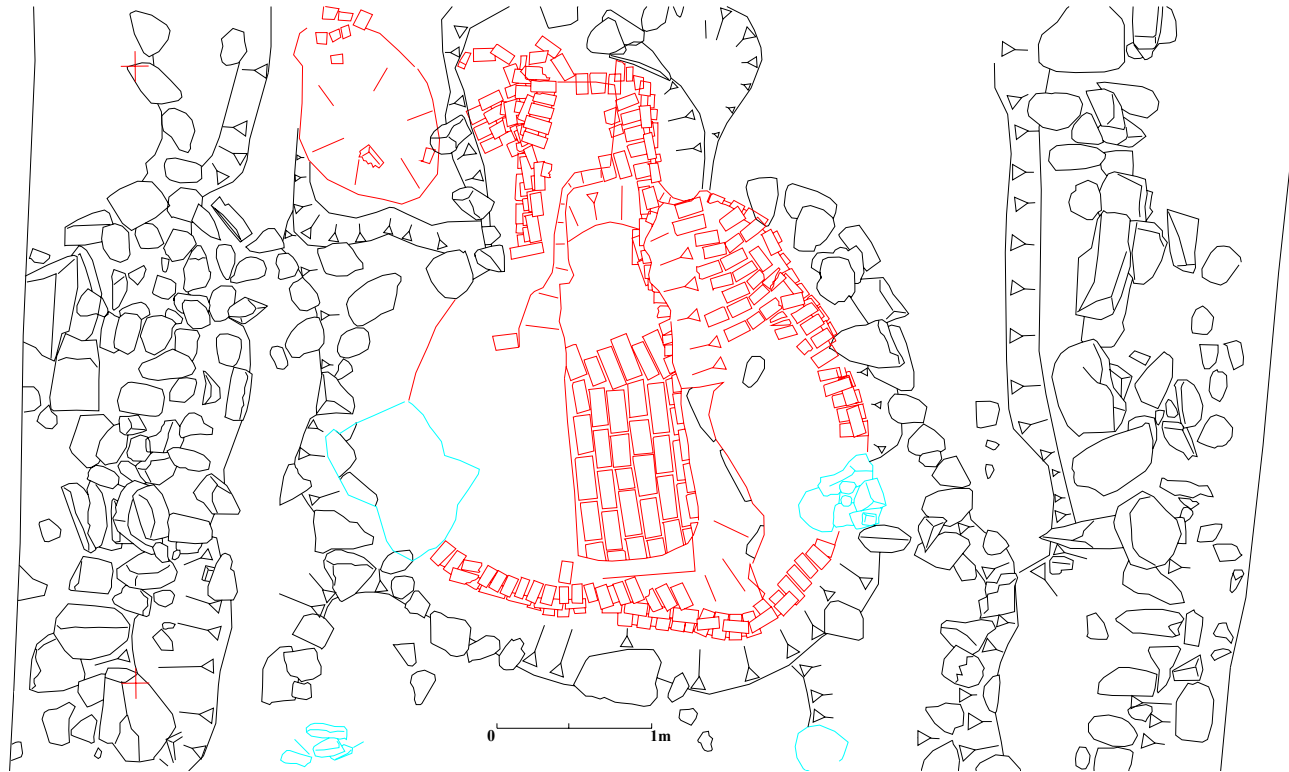
Plan 4. Structure B. Habitation with a small smithy.



Plan 5. The hearth in the northwest corner of structure B.



Plan 6. The tryworks.



Plan 7. The circular blubber furnace in the tryworks.

7. Photographs.



Picture 1. The tryworks at the end of excavation. Note the opening into the firechamber.



Picture 2. The tryworks at the end of excavation. Note the firechamber.



Picture 3. Structue A. The Cooperage at the end of excavation.



Picture 4. Structue A. Brick floor



Picture 5. Structure A. Square posthole in the southwestern corner.



Picture 6. Circular structure in the center of the brick floor. For the assembly of wooden barrels.



Picture 7. Structure B. At the end of excavation. The later added division wall is visible in the picture.



Picture 8. Structure B. The brick fireplace in the northwest corner.



Picture 9. Structure B. The fireplace before the removal of unit [54].

8. Bibliography

- Alþingisbækur Íslands*, IV.-VIII.bindi, Reykjavík 1912 – 90.
- Annálar 1400 -1800*, I – VIII. Bind, Reykjavík 1922 – 1988.
- “Annáll Magnúsar Magnússonar”, *Safn til sögu Íslands*, IV.bindi, Kaupmannahöfn og Reykjavík 1907 – 1915.
- Úr bréfabókum Brynjúlfs biskups Sveinssonar*, Kaupmannahöfn 1942.
- D.H. Duco, *De Nederlandse Kleipijp, Handboek voor dateren en Determineren*, Leiden 1987.
- Dalgård, Sune: *Dansk-Norsk Hvalfangst 1615-1660*, København 1962.
- David R., Gaimster, M., *German Stoneware 1200 - 1900: Archaeology and Cultural History*. British Museum Press, London 1997.
- “Guðs dýrð í sálanna velferð”, *Prestastefnudómar Brynjólfs biskups Sveinssonar 1639 – 1674*, Már Jónsson tók saman, Reykjavík 2005.
- Guðmundur Erlingsson, *Við strandir norður staðnæmdist sú strákajjóð*, óprentuð lokaritgerð við Háskóla Íslands, Reykjavík 1995.
- Walvisvaart in de Gouden Eeuw. Opgravingen op Spitsbergen*. Amsterdam 1988.
- Helgi Guðmundsson, “Um þrjú basknesk – íslensk orðasöfn frá 17. öld”, *Íslenskt mál og almenn málfræði*, I.árg., Reykjavík 1979.
- Helgi Þorláksson, *Saga Íslands*, VI.bindi, Reykjavík 2003.
- Helgi Þorláksson, “Frá kirkjuvaldi til konungvalds”, *Saga Íslands*, V.bindi, Reykjavík 2003.
- Ólafur Davíðsson, “Víg Spánverja á Vestfjörðum”, *Tímarit bókmenntafélagsins*, 16, 1895.
- Ólafur Jónsson, “Spönsku vísur”, *Tímarit bókmenntafélagsins*, 16, 1895.
- Spánverjavígin 1615*, Jónas Kristjánsson gaf út, Kaupmannahöfn 1950.
- Tuck, James A., et al., *Archaeology at Red Bay Labrador 1978 – 1992*, Memorial University 2005.
- Tuck, James A., Grenier, *Red Bay Labrador, World Whaling Capital A.D. 1550 – 1600*, St.Johns 1989.
- Jón lærði Guðmundsson, “Fjölmóður. Ævidrápa”, *Safn til sögu Íslands og íslenskra bókmennta*, V, Reykjavík 1916.
- Jón Ólafsson Indíafari, *Reisubók*, II.bindi, Reykjavík 1946.
- Kurlansky, M., *The Basque History of the World*, London 2000.
- Jóhannes Jónsson, “Spænskir hvalveiðimenn og dysjarnar í Spönskuvík”, *Strandapósturinn*, 23. árg. 1989.

Ragnar Edvardsson, *Fornleifasrkáning í Kaldrananeshreppi*, Fornleifastofnun Íslands 1999.

Ragnar Edvardsson, *Fornleifaskráning í Kaldrananeshreppi II*, Fornleifastofnun Íslands 2000.

Ragnar Edvardsson, *Fornleifaskráning í Kaldrananeshreppi, Lokaskýrsla*, Fornleifastofnun Íslands, Reykjavík 2002.

Ragnar Edvardsson, Magnús Rafnsson, *Hvalveiðar baska við Ísland*, Náttúrustofa Vestfjarða, NV-nr. 15-05, Bolungarvík 2005

Ragnar Edvardsson, Magnús Rafnsson, *Hvalveiðar Baska við Ísland, Fornleifarannsókn á Strákatanga í Hveravík, Kaldrananeshreppi 2005 – 2006*, Náttúrustofa Vestfjarða, NV. 12-06, Bolungarvík 2006.

Paulsen, Caroline, Magnús Rafnsson, Ragnar Edvardsson, *Foreign Whaling in Iceland, Archaeological excavations at Strákatangi in Hveravík 2007*, Náttúrustofa Vestfjarða, NV. Nr. 5-08, Bolungarvík 2008.

Trausti Einarsson, *Hvalveiðar við Ísland 1600 – 1939*, Reykjavík 1987.